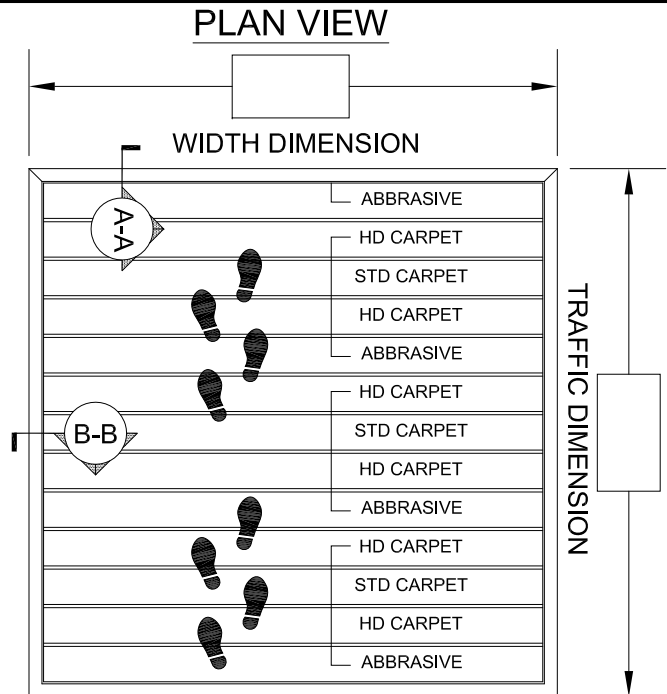
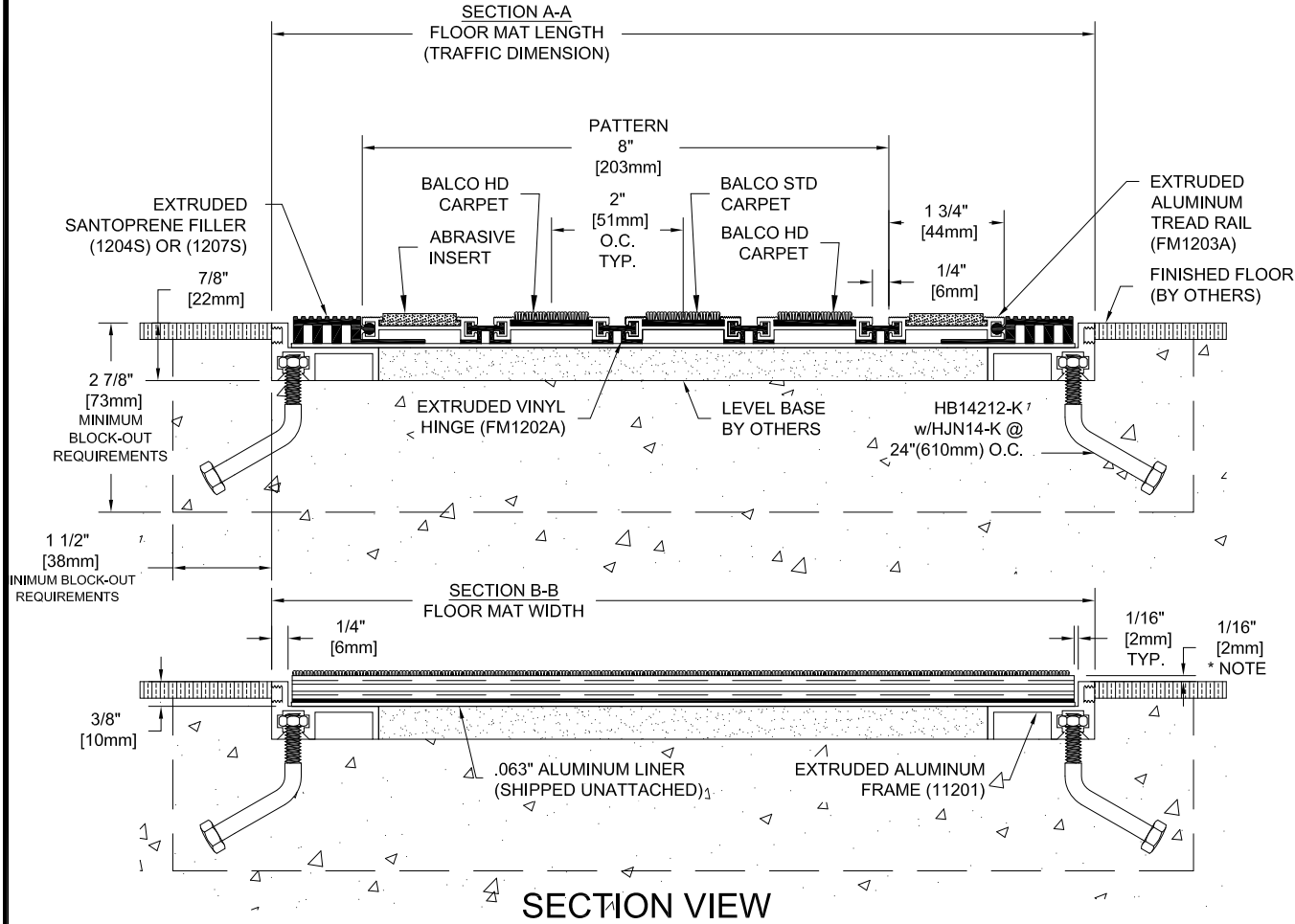


FMR-D-L

DESIGNER SERIES SURFACE FLOOR MAT
 MILL FINISH ALUMINUM TREAD RAILS
 MILL FINISH ALUMINUM FRAME
 w/ABRASIVE, CARPET, AND HEAVY DUTY CARPET INSERTS
 w/.063" ALUMINUM LINER

NOTE: MAT WILL BE APPROXIMATELY 1/16"
 HIGHER THAN FRAME DUE TO LINER.



DUE TO SIZE, MAT MAY BE SHIPPED IN MULTIPLE SECTIONS;
 INDICATE SPLIT LOCATION IF REQ'D.

Aluminum Finish:

Qty.:

Drawn By: RJT

The information contained herein is the proprietary property of **BALCO, INC.** No portion of it may be reproduced by any means or used in any form except for the purpose for which it was furnished. All rights of design and invention are hereby reserved.



2626 S. Sheridan PO Box 17249
 Wichita, Kansas 67217-0249 USA
 P: +1-316-945-9328 F: +1-316-945-0789

REV. - 4/01/15

Project: _____
 Customer: _____
 SO# _____
 Date: _____
 Page ___ of ___ Scale: NTS

Pattern:

- PAINTED DESERT
 (A: Red Stone, HD Cpt: Coffee Bean, STD Cpt: Burnt Sierra, P.V./H: Bronze)
- BLUE LAGOON
 (A: Rare Earth, HD Cpt: Blue Sapphire, STD Cpt: Denim, P.V./H: Black)
- NIGHT SKY
 (A: Black Rain, HD Cpt: Black Onyx, STD Cpt: Graphite, P.V./H: Black)
- WARM CHESTNUT
 (A: Rare Earth, HD Cpt: Coffee Bean, STD Cpt: Fawn, P.V./H: Bronze)