



2626 South Sheridan • PO Box 17249 • Wichita, Kansas 67217
Phone: (316) 945-9328 • Fax: (316) 945-0789

**INSTALLATION INSTRUCTIONS
FOR BALCO, INC.
DFH SERIES FLOOR
EXPANSION JOINT COVER SYSTEMS**



INSTALLATION INSTRUCTIONS FOR BALCO, INC. DFH SERIES EXPANSION JOINT COVER SYSTEMS

The following installation instructions are very important. Read them carefully, and be sure you understand them completely before you begin any work.

STORAGE & HANDLING

The expansion joint covers are shipped unassembled. Store this product in the horizontal position in a clean, dry location. This is a finished product. Store this product in a protected area.

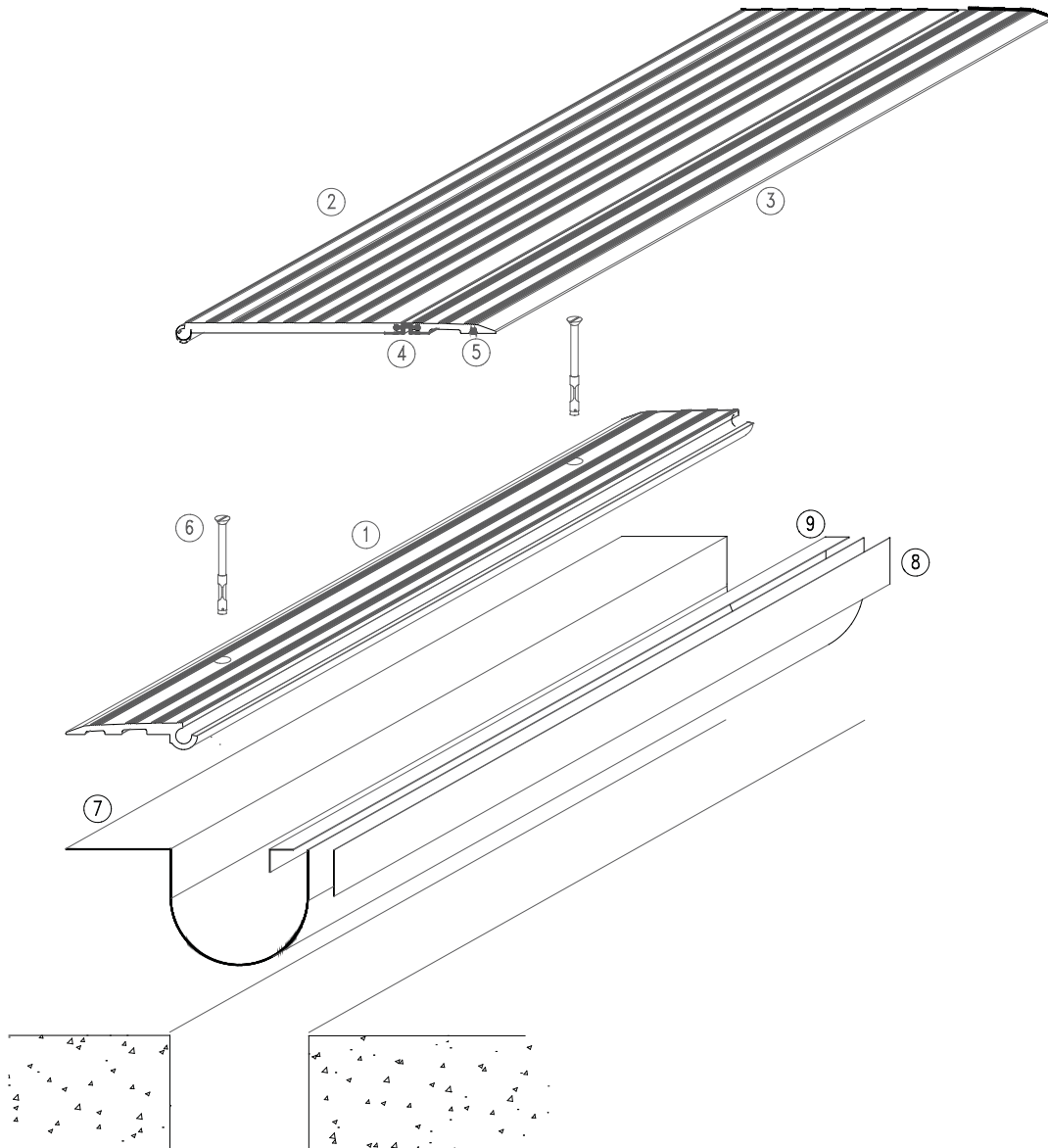


Figure 1

Parts:

1. Base Member
2. Center Plate w/Damper Tape
3. Sliding Edge Plate
4. Hinge
5. Cushion
6. Base Member Anchors
7. Water Barrier
8. Double-sided Microsealant Tape
9. Single-sided Microsealant Tape

Tools Required:

The following tools are recommended for use in the installation of the joint cover system. However, Balco, Inc. does not provide these tools:

- A. Drill Bits (for Concrete; Carbide, 3/8").
- B. Electric Drill
- C. Phillips and Slotted Screw Drivers
- D. Tape Measure
- E. Markers

INSTALLATION

These installation instructions are for use in the installation of DFH Series expansion joint cover systems. The joint cover system is illustrated in Figure 1. The joint cover system shall be installed as follows:

STEP 1. Review Balco, Inc. approved shop drawings for types and locations.

STEP 2. Select the mastic (by others) for water barrier installation. Spread the mastic on the substrate on the area of the floor surface onto which the water barrier will be installed and onto which the joint cover base member will be affixed, see Figure 2. Refer to the project details and the shop drawings to determine the placement and the width of the mastic.

STEP 3. Select the water barrier, and place it into its installed position, pressing it firmly into the mastic applied in Step 2, see Figure 3. Ensure that the water barrier is properly aligned and positioned. Make the appropriate allowances for water expulsion at this time.

STEP 4. Select the double-sided microsealant tape and the single-sided microsealant tape. Apply the

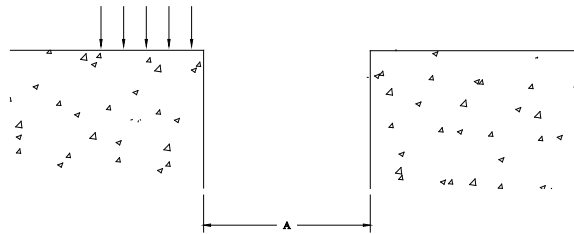


Figure 2

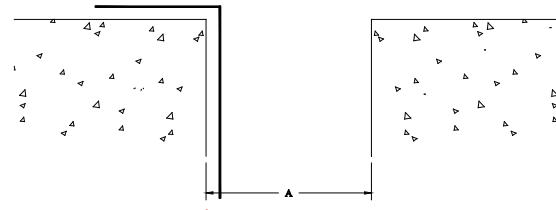


Figure 3

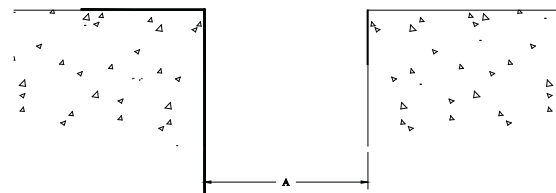


Figure 4

double sided microsealant tape continuously to the joint interface wall of the free floating plate side of the surrounding construction. Ensure that the top edge of the tape strip is nominally flush with the top surface of the assembly, see Figure 4.

STEP 5. Press the edge of the water barrier onto the double-sided tape so that it is secured to the assembly and so that the edge of the membrane is flush with the surface of the assembly, see Figure 5.

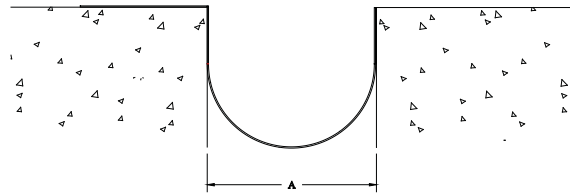


Figure 5

STEP 6. Select the single-sided microsealant tape. Place a continuous strip of the tape over the edge of the water barrier and onto the surface of the assembly, see Figure 6.

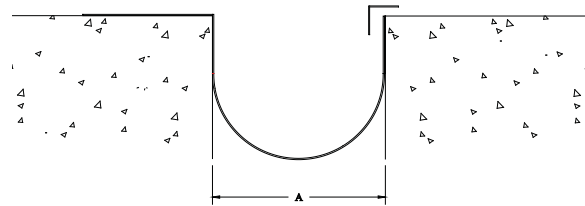


Figure 6

STEP 7. Select a section of the base member. Place the base member into its installed position. Ensure that the base member is straight, level, and properly aligned. Using the base member as a template, mark the location for the anchor holes on the concrete. Remove the base member from its position and drill the anchor holes at the marked locations (Figure 7).

Note: Drill anchor holes 1/2" to 1" deeper than anchor embedment. Clean anchor holes of debris.

STEP 3. Select the base member and its corresponding cover plate. Assemble the joint cover system by sliding the cover plate's plug into the base member's socket (Figure 8 & Figure 9).

NOTE: THE COVER PLATE IS SUPPLIED FULLY ASSEMBLED HAVING THE HINGE, THE SLIDING EDGE PLATE AND THE CUSHION ATTACHED AT THE FACTORY.

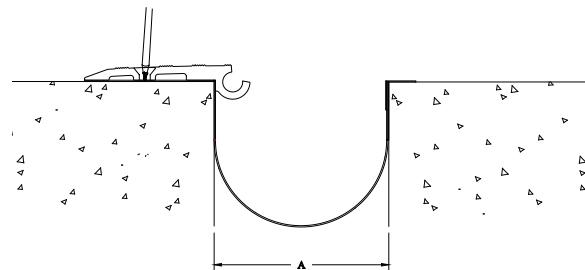


Figure 7

STEP 4. Place the assembled system into its installed position. Ensure that the anchor holes in the base member are properly aligned with the anchor holes in the concrete.

STEP 5. Using the anchors provided by the factory, attach the joint cover system to the concrete (Figure 10).

NOTE: FOR INSTALLATIONS EXPOSED TO SIGNFICANT DAILY OR SEASONAL TEMPERATURE CHANGES, LEAVE A GAP BETWEEN THE ADJOINING BASE MEMBER EXTRUSIONS AND THE ADJOINING CENTER PLATE EXTRUSIONS. THE GAP ALLOWS THE THERMAL EXPANSION OF THE EXTRUSIONS. THE RECOMMENDED GAP FOR EXTRUSIONS 10' 0" LONG OR LESS IS 1/8".



Figure 8

NOTE: THE ENDS OF THE SOCKETS IN THE BASE MEMBERS ARE CHAMFERED TO FACILITATE SLIDING OF THE COVER PLUG INTO THE SOCKET. IF IT IS NECESSARY TO TRIM A BASE MEMBER SECTION, BALCO, INC. RECOMMENDS LEAVING ONE OF THE SOCKET CHAMFERS INTACT AND SLIDING THE COVER PLUG INTO THE CHAMFERED END OF THE BASE MEMBER SOCKET TO ASSEMBLE THE SYSTEM.



Figure 9

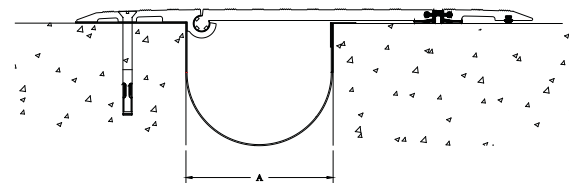


Figure 10

WARRANTY POLICY

Balco, Inc. warrants to its purchasers that all products sold by it will be free from manufacturing and material defects. Any defective product will be replaced or repaired free of any charge, provided a claim is brought to our attention, in writing, within the established warranty period following the date of shipment by us and provided our examination shows the product has failed under the terms of this warranty. The established warranty period for exterior joint cover systems (Duraflex™) is five (5) years provided the systems are installed by a Balco Certified Installer. The established warranty period for grids and mats is two (2) years. The established warranty period for all other Balco, Inc. products is one (1) year. Balco, Inc. will not be responsible for installation costs involved in such repair or replacement. Balco, Inc. shall have no obligation under this warranty if owner subjects materials to improper conditions (refer to Balco's installation instructions) This is in lieu of all other warranties, expressed or implied, and is the sole warranty extended by Balco, Inc. Our liability under this warranty is limited to repair or replacement and does not include any responsibility for consequential or other damage of any nature. It is further agreed and understood that the price stated for the seller's products is consideration for the limitation of seller's liability hereunder.

REGISTERED TRADEMARKS:

"VINYLINES" "SAF-T-GLO"
"METAFLEX" "SAF-TEN BEVEL"
"SENTRY" "DURAFLEX"
"ILLUMI-TREAD" "METABLOCK"
"MICHAEL RIZZA COMPANY"

BALCO, INC. PATENT NUMBERS:

5,782,044; 5,829,216; 5,832,678;
6,014,848; 6,115,980; 6,581,347;
6,942,419; 6,955,017; 6,962,026;
7,104,717; 7,856,781; 7,946,784;
8,079,190; 8,245,471; 8,464,485;
8,607,519; 8,601,760; 8,646,235;
Fire Resistant Joint Covers Patents
Pending