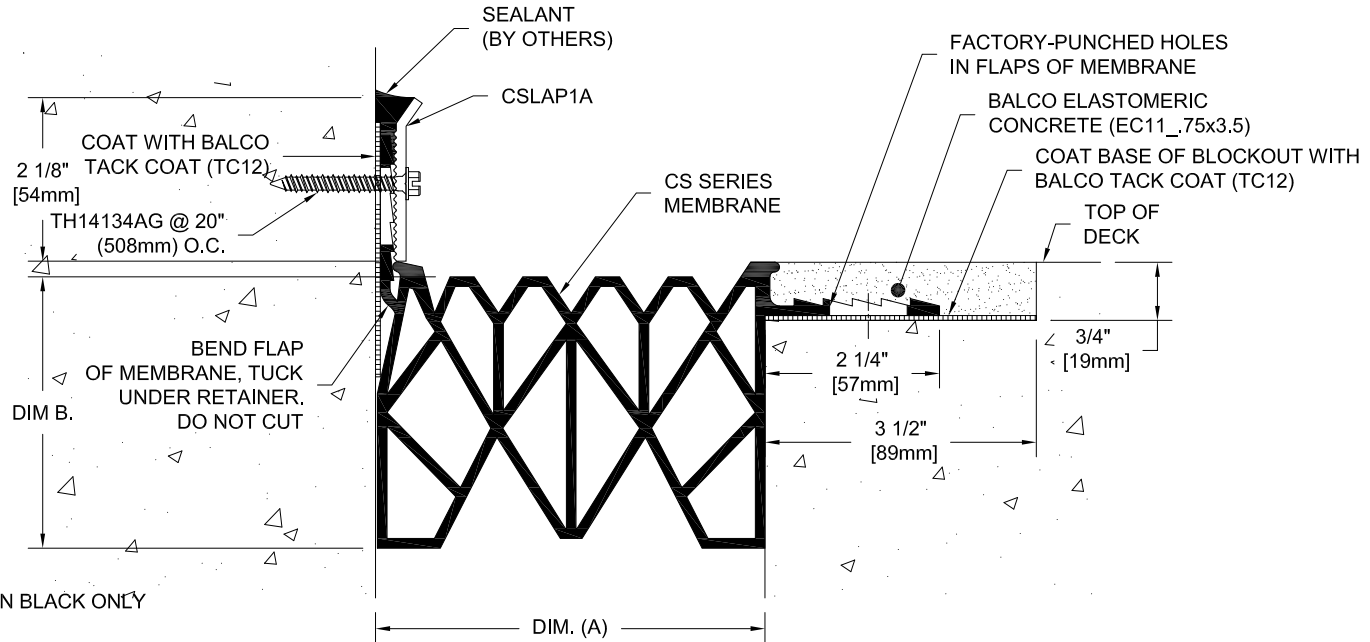


CSL-500 to 600
CHAMBERED SEAL SYSTEM



COLORS
CS SERIES SEAL: AVAILABLE IN BLACK ONLY

NOTE: EC11 AVAILABLE IN BLACK ONLY

NOTE: EXTERIOR SEAL SYSTEMS AND ACCESSORIES ARE NON-RETURNABLE ITEMS. PLEASE BE SURE TO FIELD VERIFY JOINT SIZE AND LENGTHS BEFORE RELEASING YOUR ORDER FOR FABRICATION.

NOTE: ELASTOMERIC CONCRETE AND TACK COAT HAS A DESIGNATED SHELF LIFE. PLEASE REFERENCE BALCO INSTALLATION INSTRUCTIONS AND COORDINATE MATERIAL ORDER WITH YOUR INSTALLATION SCHEDULE.

MODEL	TOTAL MOVEMENT		JOINT OPENING NOMINAL (A)		INSTALLATION SIZE		DEPTH DIM (B)
	MIN.	MAX.	MIN (A)	MAX (A)	MIN.	MAX.	
CSL-500	3 1/4" (83mm)	4 1/2" (114mm)	1 3/4" (44mm)	5" (127mm)	2 1/4" (57mm)	4 1/2" (114mm)	3 11/16" (94mm)
CSL-600	3 7/8" (98mm)	5 1/2" (140mm)	2 1/8" (54mm)	6" (152mm)	2 3/4" (70mm)	5 1/2" (140mm)	4 3/16" (106mm)

Project: _____

Customer: _____

SO# _____

Date: _____

Page ___ of ___

Scale: NTS

Length	Qty.	Color
_____	_____	_____
_____	_____	_____
_____	_____	_____
_____	_____	_____

Drawn By: HRS



A CSW Industrials Company

The information contained herein is the proprietary property of BALCO®. No portion of it may be reproduced by any means or used in any form except for the purpose for which it was furnished. All rights of design and invention are hereby reserved.

REV. - 07/20/18