



NBR

Floor Expansion Joint Covers

IMPORTANT

The following instructions are very important.

Read them carefully, and be sure you understand them completely before you begin any work.

Store this product in the horizontal position in a clean, dry location. This is a finished product. Store this product in a protected area. Do not stack anything on top of this product.

Review approved Balco shop drawings for types and locations prior to beginning work.

RECOMMENDED TOOLS

TAPE MEASURE / CHOP SAW / DRILL / DRILL BITS FOR CONCRETE / SCREWDRIVERS AND SOCKET DRIVERS

STEP ONE

If fire barrier is provided in conjunction with the joint cover system, install the fire barrier at this time.

Install the fire barrier in accordance with the applicable fire barrier installation instructions and Balco shop drawings or details.

STEP TWO

If water barrier is to be installed in conjunction with the joint cover system, place the water barrier in its installed position in the joint at this time.

Reference Balco supplementary installation instruction "EPDM Water Barrier Installation Instructions" for information regarding EPDM installation, splicing, and transitions.

NBR Floor Expansion Joint Covers

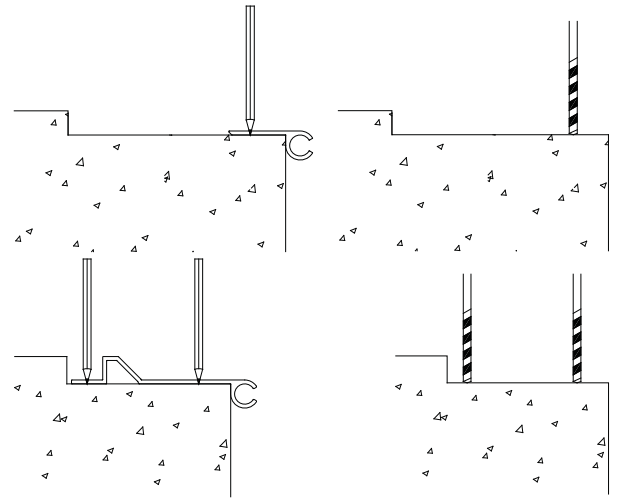
STEP THREE

Select a socket base member and place it in its installed position. Using the base member as a template, mark the locations for the anchors on the concrete.

Remove the base member and drill the anchor holes at the marked locations. Remove all dirt and debris from the anchor holes and blockouts.

IMPORTANT

Observe normal safety precautions when drilling to avoid all utilities and rebar.



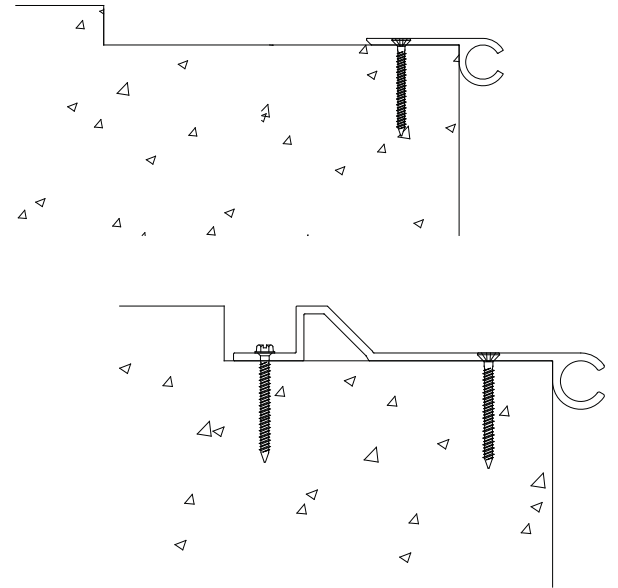
STEP FOUR

Place the socket base member into its installed position, and using the fasteners provided by the factory, attach it to the concrete.

Ensure it is plumb, level, and properly aligned.

Repeat **Steps Three and Four** until all socket base members are installed on both sides of the joint.

If the system has been supplied with single-piece base members, proceed to **Step Nine**.



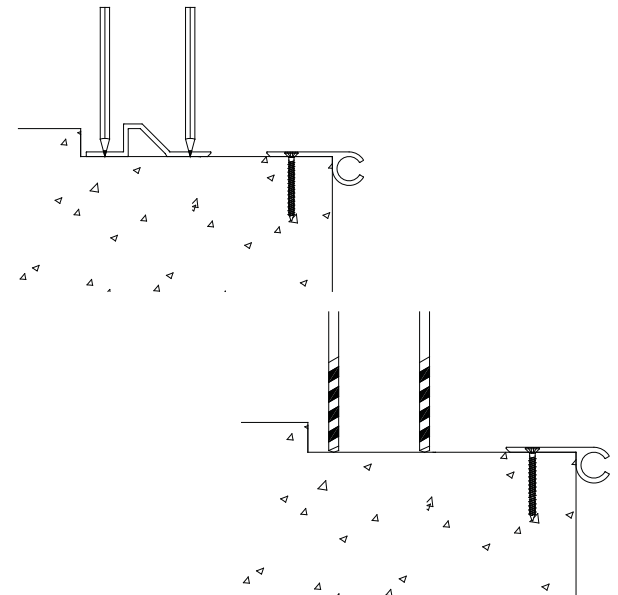
STEP FIVE

Select a ramp base member and place it in its installed position. Using the base member as a template, mark the locations for the anchors on the concrete.

Remove the base member and drill the anchor holes at the marked locations. Remove all dirt and debris from the anchor holes and blockouts.

IMPORTANT

Observe normal safety precautions when drilling to avoid all utilities and rebar.



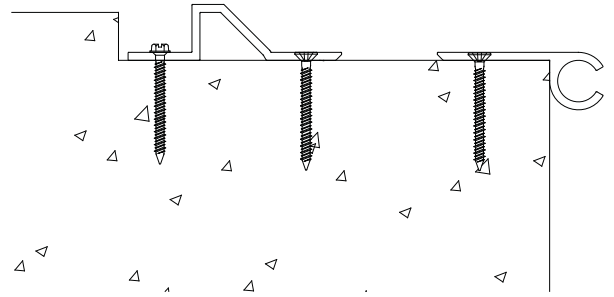
NBR Floor Expansion Joint Covers

STEP SIX

Place the ramp base member into its installed position, and using the fasteners provided by the factory, attach it to the concrete.

Ensure it is plumb, level, and properly aligned.

Repeat **Steps Five and Six** until all base members are installed on both sides of the joint.



STEP SEVEN

If the system has been supplied without base member spacers, proceed to **Step Nine**.

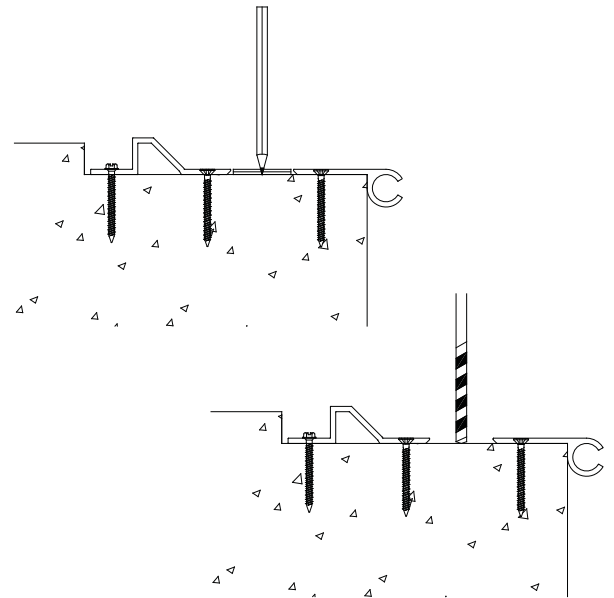
If the system is provided with base member spacers, select a base member spacer and place it in its installed position.

Using the spacer as a template, mark the locations for the anchors on the concrete.

Remove the spacer and drill the anchor holes at the marked locations. Remove all dirt and debris from the anchor holes and blockouts.

IMPORTANT

Observe normal safety precautions when drilling to avoid all utilities and rebar.



STEP EIGHT

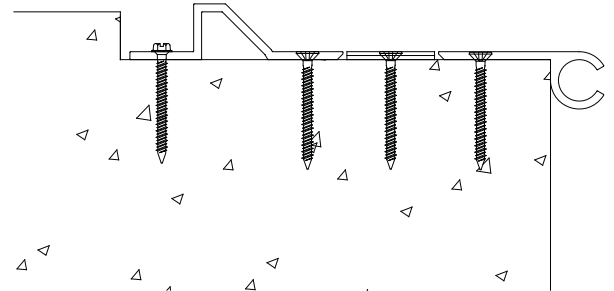
Place the base member spacer into its installed position, and using the fasteners provided by the factory, attach it to the concrete.

Ensure it is plumb, level, and properly aligned.

Repeat **Steps Seven and Eight** until all base member spacers are installed on both sides of the joint.

NOTE

Base member spacers should fit loosely within the space between the ramp and socket base members. Do not install the base member spacers tight within the space between base members. If adjustment is required, use a power sander or a sharp utility knife to remove some material from the spacer.

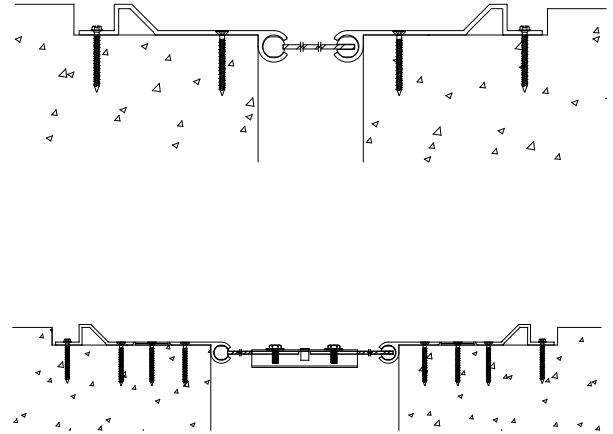


NBR Floor Expansion Joint Covers

STEP NINE

Select a centering bar, and insert one of its polymer spheres into the track of one of the base members.

Insert the other sphere into the opposite base member's track. Repeat this procedure for each centering bar. Ensure that the centering bars are installed at a diagonal and are parallel to one another.



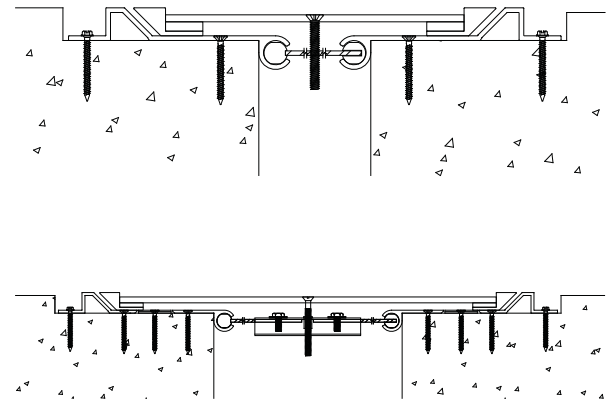
STEP TEN

Select a cover plate and place it along the side of the joint, aligning the cover plate with its installed position.

Using the cover plate as a template, slide the centering bars within the base member tracks so that the anchor hole in each centering bar is aligned with one of the anchor holes in the cover plate.

Place the cover plate into its installed position spanning the joint, and attach the cover plate to the centering bars using the centering bar bolts provided by the factory.

Tighten the centering bar bolts by hand until they are firmly in place. Do not overtighten the centering bar bolts.



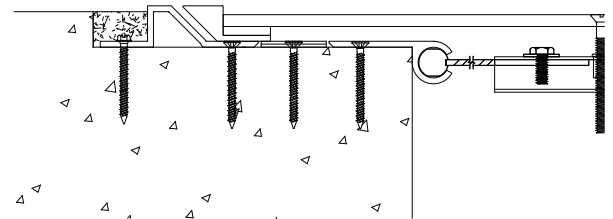
STEP ELEVEN

Apply grout (by others) continuously between the base members and the blockout.

Install the grout in accordance with the grout manufacturer's written instructions.

Ensure that the grout is level with the surface of the surrounding concrete.

Remove all excess grout from the exposed surfaces of the aluminum base members before the grout sets up.



NBR Floor Expansion Joint Covers

STEP TWELVE

After the grout has cured, install the finish floor material in accordance with the instructions provided by the finish floor material manufacturer.

