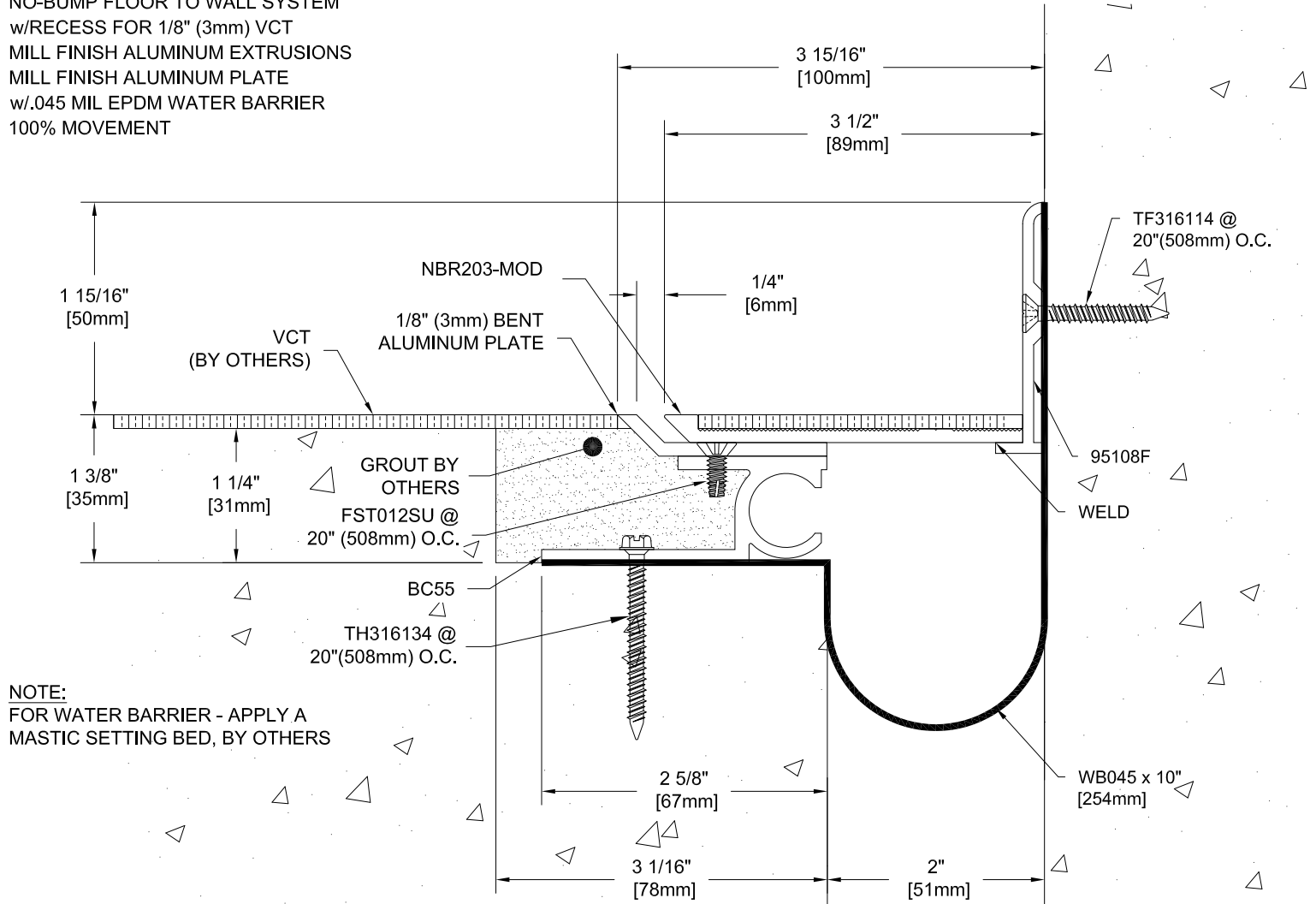


# NBRL-2x1/8"g

NO-BUMP FLOOR TO WALL SYSTEM  
 w/RECESS FOR 1/8" (3mm) VCT  
 MILL FINISH ALUMINUM EXTRUSIONS  
 MILL FINISH ALUMINUM PLATE  
 w/.045 MIL EPDM WATER BARRIER  
 100% MOVEMENT



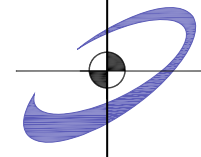
NOTE:  
 FOR WATER BARRIER - APPLY A  
 MASTIC SETTING BED, BY OTHERS

Project:	
Customer:	
SO#	
Date:	
Page ___ of ___	Scale: NTS

Length	Qty.	Color

Drawn By: GAA

The information contained herein is the proprietary property of **BALCO, INC.** No portion of it may be reproduced by any means or used in any form except for the purpose for which it was furnished. All rights of design and invention are hereby reserved.



**BALCO INC**

2626 S. Sheridan PO Box 17249  
 Wichita, Kansas 67217-0249 USA  
 P: +1-316-945-9328 F: +1-316-945-0789