



BALCO INC

MetaFlex® 5000 MetaBlock™

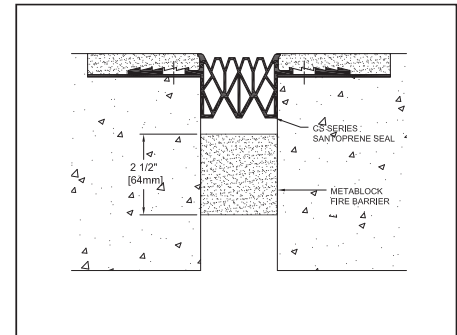
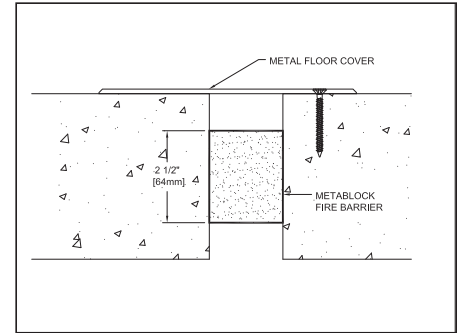
Thin Slab Fire Barrier

Balco, Inc. is an innovative engineering design manufacturer at the forefront of Life Safety building product design. Our new MetaBlock™ fire barrier combines impressive 2, 3 and 4 hour UL® listed designs with the absolute simplest installation method available for floor and wall expansion joint applications. MetaBlock's™ thin design allows for installation in shallow concrete, block and gypsum board construction allowing ample space for installation of expansion joint covers without interference of waterproof construction. There are no mechanical fasteners, or caulk, required for installation or splicing.

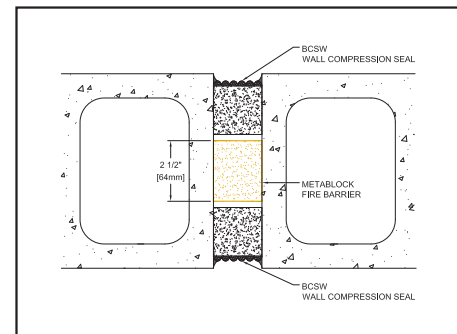
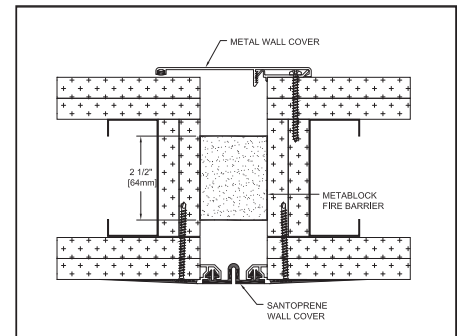
Features and Benefits

- No Mechanical Fasteners or Caulk Required
- Thin Design for Construction, requires only 2.5" depth for fire barrier
- Exterior and Interior Installations
- Plus and Minus 50% Movement
- Works with Elastomeric and Metal Expansion Joint Covers
- Simple Installation Using Spray Adhesive
- No Solvents or Carcinogens
- Moisture Resistant
- ASTM E 1399; ASTM E 1966; UL2079; IBC; and NFPA 5000 Compliant
- UL Listed
- Patent Pending
- Ships in 7' Lengths
- 3 and 4 hour ratings available for floor applications, certain joint cover restrictions apply

TYPICAL FLOORS



TYPICAL WALLS



MetaFlex® 5000 MetaBlock™					
Selection Chart					
FLOOR			WALL		
2 Hour Rated			1 or 2 Hour Rated		
Model #	Min Joint	Max Joint	Model #	Min Joint	Max Joint
MBF2H0125	1 / 2 "	1 1 / 4 "	MBW2H0125	1 / 2 "	1 1 / 4 "
MBF2H0238	3 / 4 "	2 3 / 8 "	MBW2H0238	3 / 4 "	2 3 / 8 "
MBF2H0350	1 1 / 4 "	3 1 / 2 "	MBW2H0350	1 1 / 4 "	3 1 / 2 "
MBF2H0450S	1 1 / 2 "	4 1 / 2 "**	MBW2H0450S	1 1 / 2 "	4 1 / 2 "**

* Note MBF2H0450S & MBW2H0450S were Factory tested for 4 1/2" seismic and UL Fire tested to 4" maximum



2626 S. Sheridan • Wichita, KS 67217
Ph: 316.945.9328 • Fx: 316.945.0789

1.800.767.0082
www.balcousa.com





BALCO INC

MetaFlex® 5000 MetaMat™

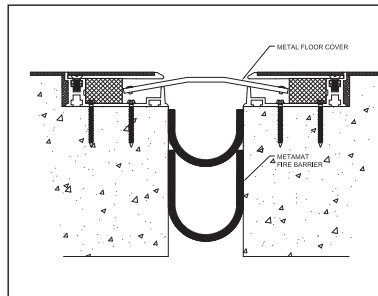
Balco, Inc. is an industry leading manufacturer of Life Safety and Fire Barrier products for use in the commercial construction industry. Our patented MetaMat™ fire barrier is designed to fire rate seismic and expansion joint conditions for up to 2 hours in floor and wall applications. The unique very thin profile of MetaMat™ allows for installation in small openings and is forgiving in instances where the field condition does not match design drawings. Installation is simple because no caulk is required for floors, walls, splices or transitions of any kind.

MeaFlex® 5000 MetaMat™					
Selection Chart					
FLOOR			WALL		
2 Hour Rated			1 or 2 Hour Rated		
Model #	Min Joint	Max Joint	Model #	Min Joint	Max Joint
MF2H03	1 / 2 "	3 "	MW2H03	1 / 2 "	3 "
MFV2H03	1 / 2 "	3 "	MCW2H03	1 / 2 "	3 "
MF2H04F	1 "	4 "	MWH04	1 "	4 "
MFV2H04F	1 "	4 "	MCW2H04	1 "	4 "
MF2H06	1 1 / 2 "	6 "	MW2H06	1 1 / 2 "	6 "
MFV2H06	1 1 / 2 "	6 "	MCW2H06	1 1 / 2 "	6 "

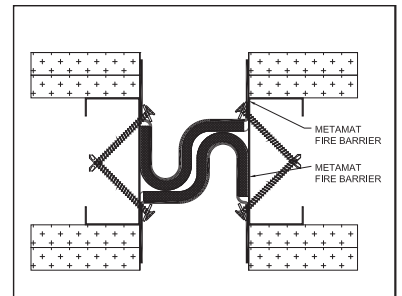
Features and Benefits

- Cost Effective, Light Weight
- Thin Flexible Design
- Exterior and Interior Installations
- Plus and Minus 50% Movement to 100% Movement
- Works with Elastomeric and Metal Expansion Joint Covers
- Simple Installation, No Caulk Required
- No Solvents or Carcinogens
- Moisture Resistant
- ASTM E 1399; ASTM E 1966; UL2079; IBC; & NFPA 5000 Compliant
- UL Listed
- Patented
- MetaMat available in 20' and 40' rolls

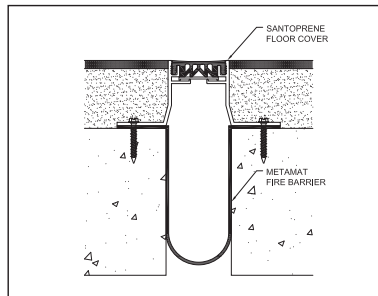
MF2H06



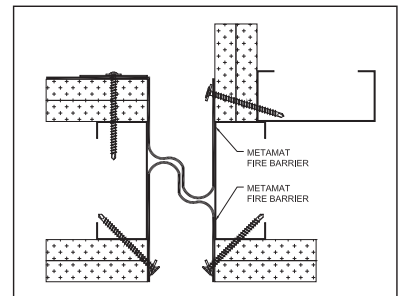
MW2H06



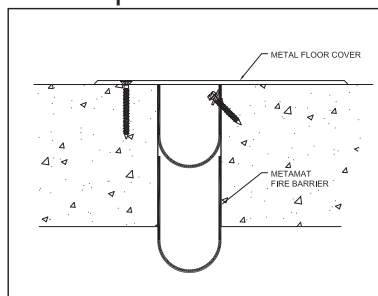
MF2H03



MCW2H03/04



MF2H04F | FLOOR TO FLOOR



2626 S. Sheridan • Wichita, KS 67217
Ph: 316.945.9328 • Fx: 316.945.0789

1.800.767.0082
www.balcousa.com

